

WIN IT BIG TECHNICAL

The lights, the glamour, the prizes! In this season's Technical Challenge, you get to explore game shows. Use your technical skills to design and create your very own game show, complete with a gimmick, a reveal, and an effect meant to dazzle the senses. What challenges might you face, and what prizes are waiting to be won?

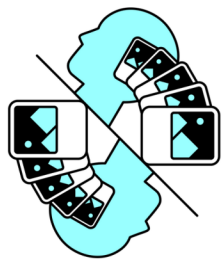
- Create and present a game show.
- Include a host character and at least one contestant.
- Build tension with a raising-the-stakes event.
- Design and create a gimmick, a reveal, and a razzle-dazzle effect for your game show.
- Create and present two Team Choice Elements that show off the team's interests, skills, areas of strength, and talents.



ABOVE AND BEYOND ENGINEERING

We invite you to dive right into the middle of the action! With this season's Engineering Challenge, you'll tell a story that starts with an *in medias res* scene. Make sure to include something important that expands, extends, or goes above and beyond. Defy gravity as you load up your structure with weights placed as far away from the base as possible. We can't wait to see how you'll go above and beyond!

- Test how much weight a team-created structure can hold by placing weights onto the Structure as far from the center as possible.
- Create and present a story in which something important expands, extends, or goes above and beyond.
- Begin the Presentation with an *in medias res* scene.
- Include an expansion effect.
- Create and present two Team Choice Elements that show off the team's interests, skills, areas of strength, and talents.



UNFORGETTABLE SCIENTIFIC

Did you see that!? Are you sure? Can you trust your memory, or have your eyes been deceived? Find out in this season's Scientific Challenge, when you explore the science of human memory and misdirection. Bring a memory to life with your memory depiction, complete with a special effect. How will your team be remembered?

- Create and present a story about how a character recalling a memory leads to a realization.
- Integrate your team's research about the science of human memory into the Presentation.
- Create and present a memory depiction. Enhance the memory depiction with a special effect.
- Include a misdirection in your Presentation.
- Create and present two Team Choice Elements that show off the team's interests, skills, areas of strength, and talents.



BECOMING SUPER FINE ARTS

Some are destined for great good, others for great evil. In this season's Fine Arts Challenge, you'll have the chance to show how one hard choice can set two characters on two different courses, as one becomes a superhero and the other becomes a supervillain. Use stage makeup and a technical costume to enhance some of your Presentation. It's time to decide your fate!

- Create and present an origin story that shows how one character becomes a superhero and a different character becomes a supervillain.
- Use theatrical methods to portray a difficult decision, situation, and/or event.
- Use stage makeup on at least one team member.
- Design and create one technical costume.
- Create and present two Team Choice Elements that show off the team's interests, skills, areas of strength, and talents.

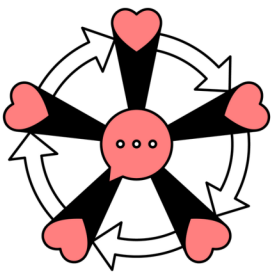


CASTING SHADOWS

IMPROVISATIONAL

Bright and dark, young and old, many and few...the world is full of opposites. Explore opposing themes while telling a story based on an inciting incident. Include a resolution trope and a random setting. Don't get lost in darkness as you use a shadow screen and shadows to enhance your story! Get ready to step out of the shadows and into the spotlight in this season's Improvisational Challenge!

- Create and present an improvisational skit based on an inciting incident.
- Research pairs of opposing themes and incorporate a pair into the skit.
- Include a randomly selected setting.
- Research resolution tropes and incorporate one of them into the skit.
- Use a shadow screen and a box of materials to enhance the skit.

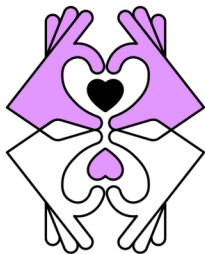


GIVE AND TAKE

SERVICE LEARNING

In this Challenge, your team will take on a service project that addresses a real community need. Then, you'll tell a story about what happens when two characters team up to resolve a dispute. How will a misunderstanding throw a wrench into the situation? It's time to flex your negotiation skills when you take on this season's Service Learning Challenge!

- Identify, design, carry out, and evaluate a project that addresses a need in a real community.
- Create and present a story about at least two conflicting characters who have to work together to address or resolve a dispute.
- Include a misunderstanding and at least two different viewpoints.
- Enhance your Presentation with a dispute depiction.
- Create and present two Team Choice Elements that show off the team's interests, skills, areas of strength, and talents.

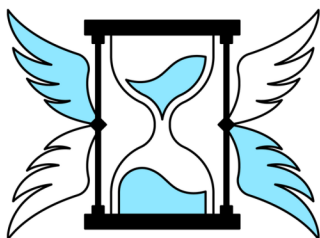


HELPING HANDS

EARLY LEARNING

Teachers, firefighters, librarians, nurses, pet adoption coordinators, food bank workers, and many other community helpers spend their days working to make our world a better place. It's time to learn about how you can help too! Every day is a great day to lend a helping hand in this season's Early Learning Challenge!

- Research different kinds of community helpers.
- Create and present a play about community helpers working together to solve a problem.
- Design and create a set that shows where at least one of the community helpers works.
- Create and present a song about helping.
- Create and present one Team Choice Element that shows off the team's interests, skills, areas of strength, and talents.



INSTANT CHALLENGE

Instant Challenges require teams to engage in quick, creative, and critical thinking. At a tournament, a team will receive an Instant Challenge and the materials with which to solve it.

- The team members must think on their feet by applying appropriate skills to produce a solution in a period of just five to eight minutes.
- Instant Challenges are performance-based, task-based, or a combination of the two.
- Although each Instant Challenge has different requirements, all Instant Challenges reward teams for their teamwork.
- Instant Challenges are kept confidential until the day of the tournament.